

# WMOPP – Wall Mount Optical Patch Panel

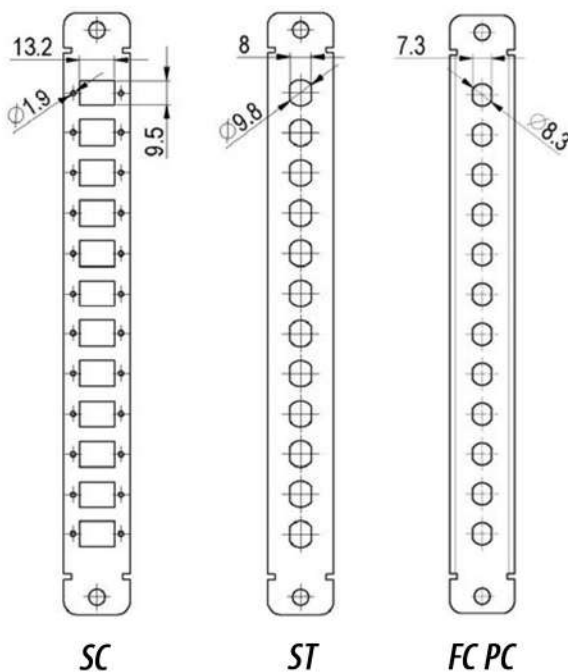
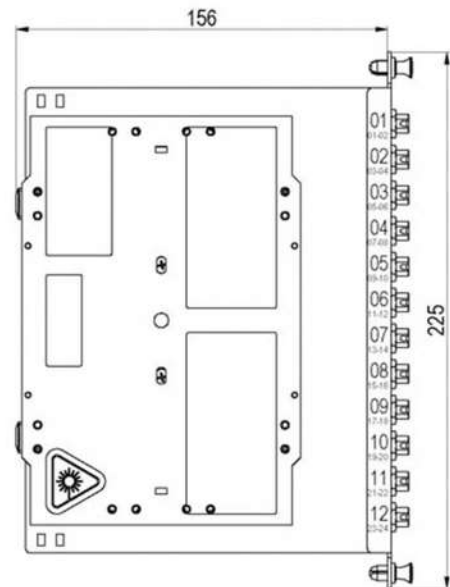
## WMOPP – Carrier (Plug-in module)

### Features:

- WMOPP Carrier is used as cassettes carrier and holder for adapters.
- It can be ordered for different types of cutouts (SC, ST, FC PC, ...)
- Carrier can be equipped with 12 adapters and fiber pigtails, different types

### Parts:

1.	Drawer (Aluminium)	1	pc	
2.	Splice Cassette with cover, two hinges, one or two 12heat shrink splice Holder	1	set	
3.	Optical Adapters (different)	max 12	pcs	
4.	Pig tail (different Type)	max 24	pcs	
5.	Heat shrink splice protectors Ø2,5x40mm	Max 24	pcs	Option



## WMOPP - Carriers / Adapters Plates - C/ X1/X2\_ X3\_ X4\_ X5

X1	Carrier Type	
T1	Carrier Drawer	
T2	Adapters Plate	

X3	Adapters	
0	Without	
1	Included	

X2	ADAPTERS TYPE		
FU	FC-UPC Blue	SX	
FA	FC-APC Green	SX	
SU	SC-UPC Blue	SX	
SA	SC-APC Green	SX	
LU	LC-UPC Blue	DX	
LA	LC-APC Green	DX	
EU	E2000-UPC Blue	SX	
EA	E2000-APC Green	SX	
XU	LX.5-UPC Blue	DX	
XA	LX.5-APC Green	DX	
FU	FC-UPC	SX	
FA	FC-APC	SX	
TU	ST-UPC	SX	
TA	ST-APC	SX	
00	without		

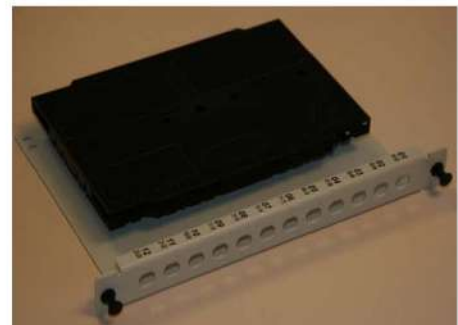
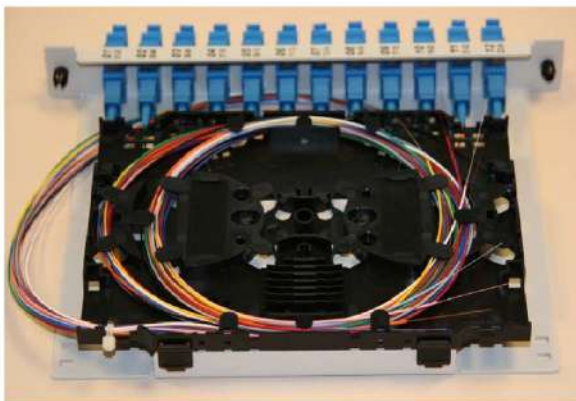
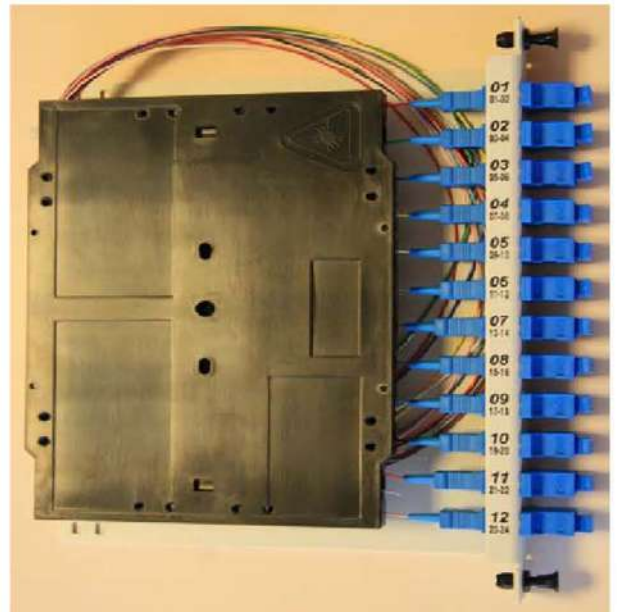
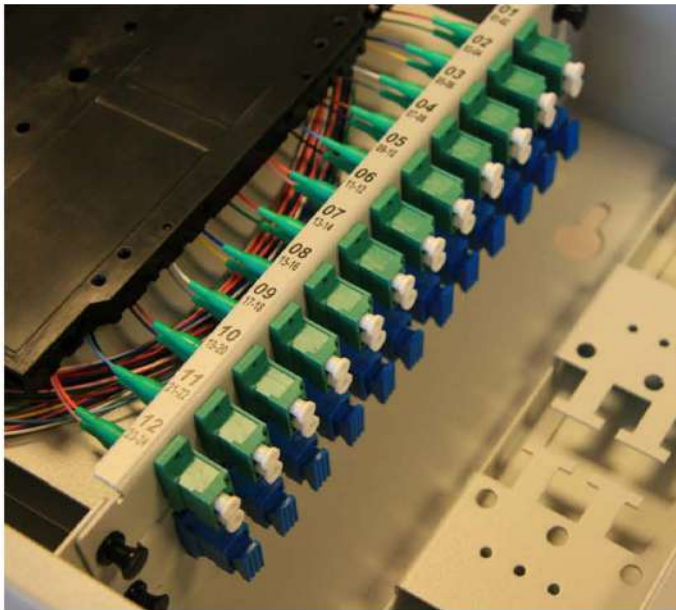
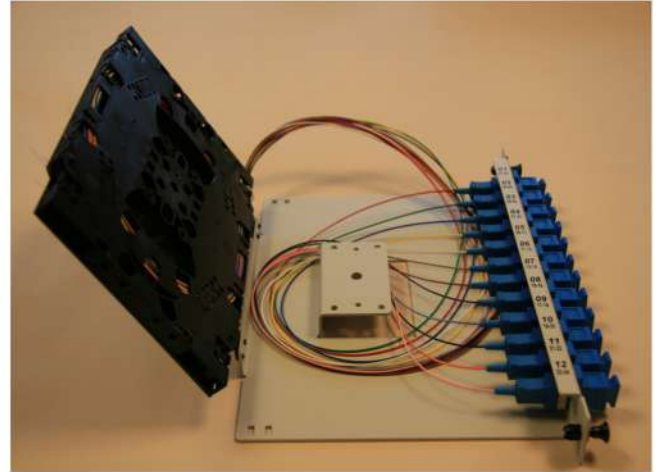
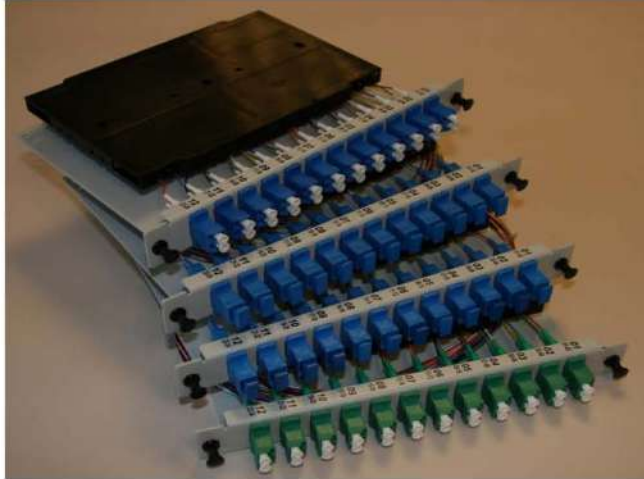
X4	Pigtails	
0	Without	
1	Included	

X5	Splice protectors Type/Quantity		
H	Heat Shrink Splice Protectors	up to 96	
C	Crimp (Block) Splice Protectors	up to 96	

### NOTES:

- Carrier Drawer wit SX Adapters Assembly set: Aluminium drawer-1pc, Splice Cassette ZK06 with Cover and Hinges-1set, Splice Protectors Holder-1pc
- Carrier Drawer wit DX Adapters Assembly set: Aluminium drawer-1pc, Splice Cassette ZK06 with Cover and Hinges-2sets, Splice Protectors Holder-2pcs
- Carrier Drawer / Adapters Plate capacity, with SX Adapters 12 ports, with DX adapters 24 ports per unite!

# WMOPP – Wall Mount Optical Patch Panel

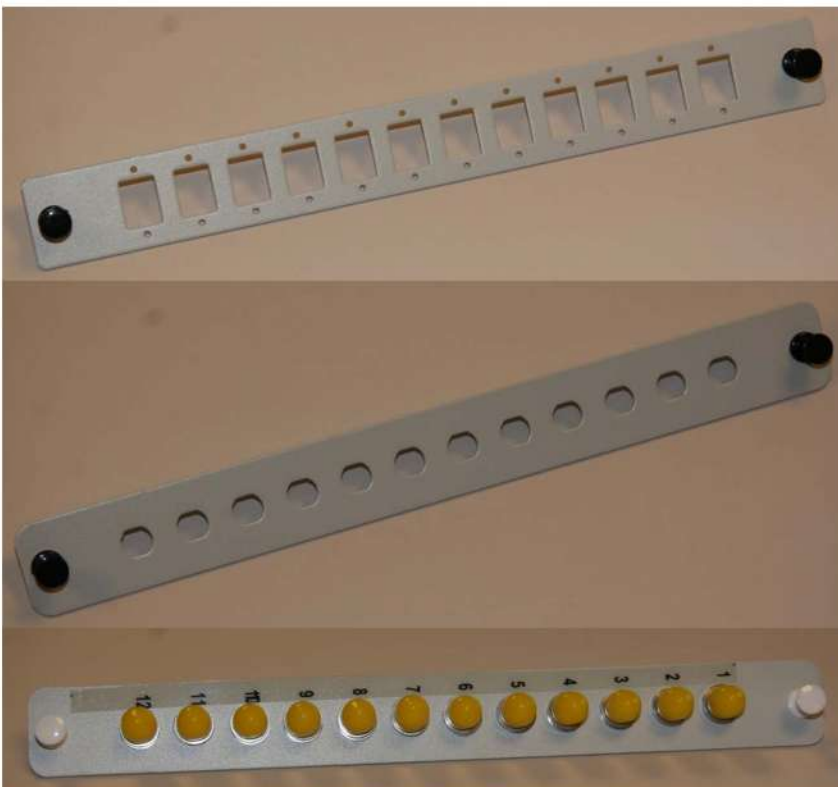


## WMOPP – Wall Mount Optical Patch Panel

Picture of Splice – Patch Through Assembly Wall Box - 2



Picture of Splice – Patch Through Adapters Plates



*SC Cut outs*

*FC Cut outs*